



Visit www.oregontsunami.org
to find more great resources!

TSUNAMI EVACUATION MAP OVERLEAF LODGE

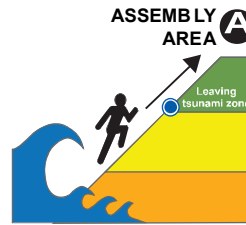
Lincoln County, Oregon

IF YOU FEEL AN EARTHQUAKE:

- Drop, cover and hold
- Move immediately inland to higher ground
- Do not wait for an official warning

SI USTED SIENTE EL TEMBLOR:

- Tírese al suelo, cúbrase, y espere
- Dirijase de inmediato a un lugar más alto que el nivel del mar
- No espere por un aviso oficial

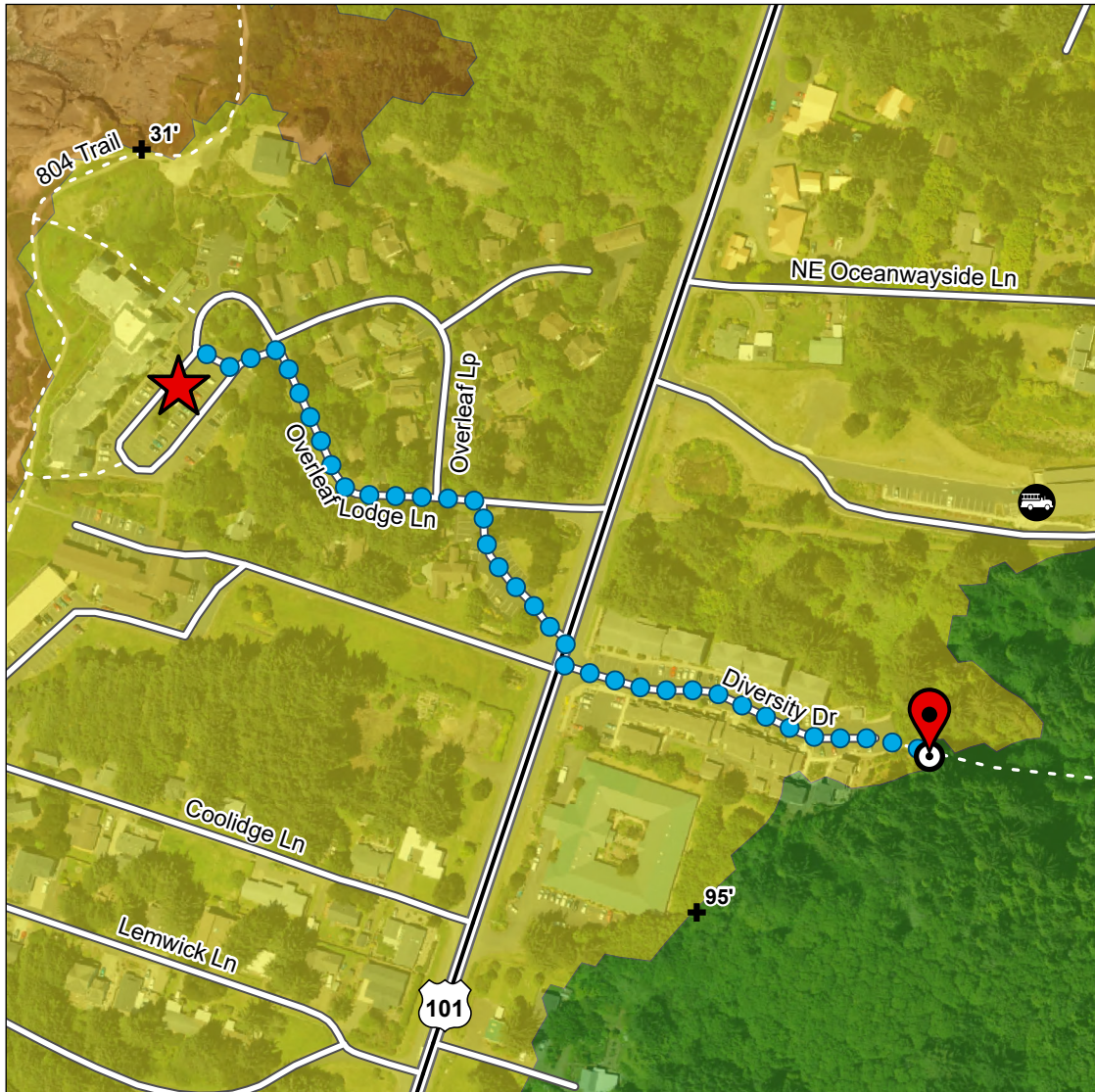


ASSEMBLY AREA **ÁREA REUNIÓN**

NOTICE: This tsunami evacuation zone map was developed by DOGAMI for the purpose of guiding the public out of the tsunami inundation zone in the event of a tsunami evacuation. This map adopts recommendations from the Oregon Tsunami Advisory Council. The evacuation routes were developed by DOGAMI, in consultation with local emergency officials and OEM.



OUTSIDE HAZARD AREA: Evacuate to this area for all tsunami warnings or if you feel an earthquake.	ZONA DE PELIGRO EXTERIOR: Evacue a esta área para todas las advertencias del maremoto o si usted siente un temblor.
LOCAL CASCADIA EARTHQUAKE AND TSUNAMI: Evacuation zone for a local tsunami from an earthquake at the Oregon coast.	MAREMOTO LOCAL (terremoto de Cascadia): Zona de evacuación para un tsunami local de un temblor cerca de la costa de Oregon.
DISTANT TSUNAMI: Evacuation zone for a distant tsunami from an earthquake far away from the Oregon coast.	MAREMOTO DISTANTE: Zona de evacuación para un tsunami distante de un temblor lejos de la costa de Oregon.



Nearest high ground
430 Diversity Drive
Distance: **0.3 miles**
You have **8 minutes** to reach safety
Required speed : **Walk** or faster...
(faster than 30 min/mile pace)



If you can safely take a faster route, take it!

Step	Direction	Distance
1	Head ESE on Unnamed Road	67 feet
2	Turn left and go on Unnamed Road	73 feet
3	Turn right and go on Overleaf Lodge Ln	429 feet
4	Turn right and go on Unnamed Road	248 feet
5	Turn right and go on Highway 101	37 feet
6	Turn left and go on Diversity Dr	481 feet
7	Keep right and go on Unnamed Trail	83 feet
End	Finish at 430 Diversity Drive	

SCALE / ESCALA

Feet

0 100 200

MAP SYMBOLS / SIMBOLOS DEL MAPA

- You are here/ Usted está aquí
- Safety destinations / Destinos de seguridad
- Evacuation route / Ruta de evacuación
- Elevation, in feet / Elevación, en pies
- Fire Department / Bomberos

See other side for more information

Map Date: 7/29/2024



About Tsunamis

A tsunami is a series of sea waves, usually caused by displacement of the ocean floor by an undersea earthquake. As tsunamis enter shallow water near land, they increase in height and can cause great loss of life and property damage. Typical wave heights from tsunamis occurring in the Pacific Ocean over the last 500 years have been 20–65 feet at the shoreline, and in some areas as much as 100 feet.

Research suggests that tsunamis have struck the Oregon coast on a regular basis. They can occur any time, day or night. Scientists distinguish two types of tsunami. Those caused by an undersea earthquake near the Oregon coast (a local tsunami) and an undersea earthquake that occurs far away (e.g. Japan or Alaska) from the Oregon coast (a distant tsunami).

For a distant tsunami, you will have time to respond, and warnings will be issued. In contrast, for a local tsunami you will first feel an earthquake characterized by strong shaking. A tsunami is probably already on its way. Quickly move inland to high ground.

BE PREPARED!

- ◆ Practice your evacuation route
- ◆ Assemble emergency go-kits with at least a 96- hour supply for each family member:

- Local map showing evacuation route to high ground
- First-aid supplies, prescription and non-prescription medication
- Water bottle and filtration or treatment supplies capable of providing 1 gallon per person per day
- Non-perishable food (ready-to-eat meals, food ration bars, baby food, energy bars)
- Cooking and eating utensils, can opener, Sterno® or other heat source
- Matches in water-proof container or lighter
- Shelter (tent), sleeping bags, blankets
- Portable radio, NOAA weather radio, flashlight, extra batteries
- Rain gear, sturdy footwear, extra clothing
- Personal hygiene items (toilet paper, soap, toothbrush)
- Tools and supplies (pocket knife, shut-off wrench, duct tape, gloves, whistles, plastic bags)
- Cash - small currency amounts

WHAT TO DO! *If you feel an earthquake, a tsunami may be coming.*

- ◆ **DROP, COVER, HOLD ON** until the earthquake is over. Protect yourself, then...
- ◆ **QUICKLY MOVE INLAND TO HIGH GROUND.**
DO NOT DELAY OR WAIT for an official warning.
GO ON FOOT.
- ◆ **FOLLOW EVACUATION ROUTE SIGNS AND ARROWS**
- ◆ **DO NOT SLOW DOWN.** Identify points of safety: **BLUE LINES** painted on the road, “Leaving Hazard Zone” signs, or Assembly Area* signs.
- ◆ **DO NOT RETURN** to the inundation zone — large waves may continue to come onshore for up to 12 hours. **WAIT** for official NOAA tsunami cancellation and a cautionary re entry notice by local emergency officials before returning to low-lying areas.

WHAT TO DO for both distant and local tsunamis

1. Evacuate on foot if possible. Follow evacuation signs and arrows to the nearest point of safety or Assembly Area*. Identify points of safety: **BLUE LINES** painted on the road, “Leaving Hazard Zone” signs, or Assembly Area* signs.
2. If the emergency is a distant tsunami, then help may arrive. In the event of a local tsunami, it is unlikely that anyone will help you, so make a plan and be prepared!
3. Stay away from potentially hazardous areas. **WAIT** for official NOAA tsunami cancellation and a *cautionary re-entry* notice by local emergency officials before returning to low lying areas. Tsunamis often follow river channels, and dangerous waves can persist for several hours. Local officials must inspect flooded or earthquake-damaged structures before anyone can go back into them.

*Assembly Areas **A** are included on the map, where identified. Always evacuate to your nearest point of safety first. Make your way to the nearest Assembly Area after large waves have stopped.

Look for tsunami hazard zone signs and be ready to leave an area by following evacuation route signs

